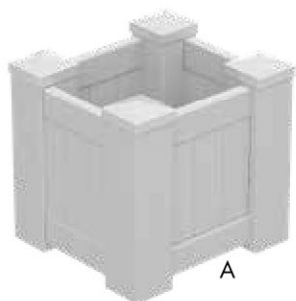
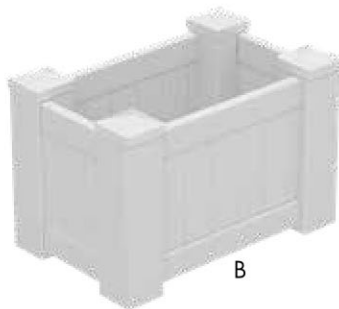


# PLANTER BOX

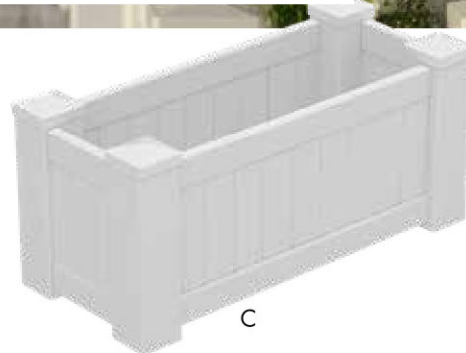
## INSTALLATION GUIDE



A



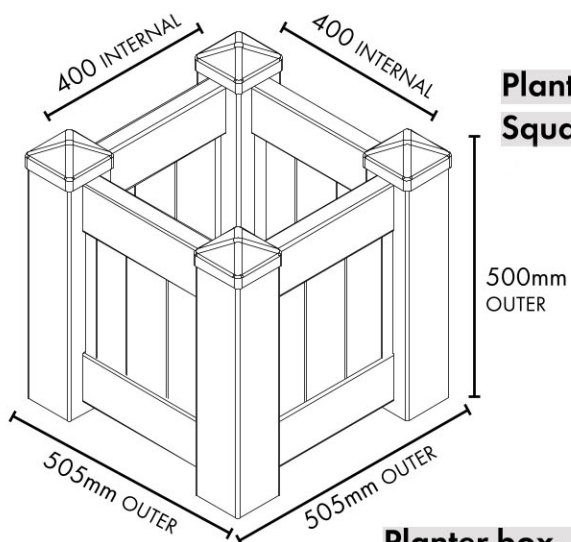
B



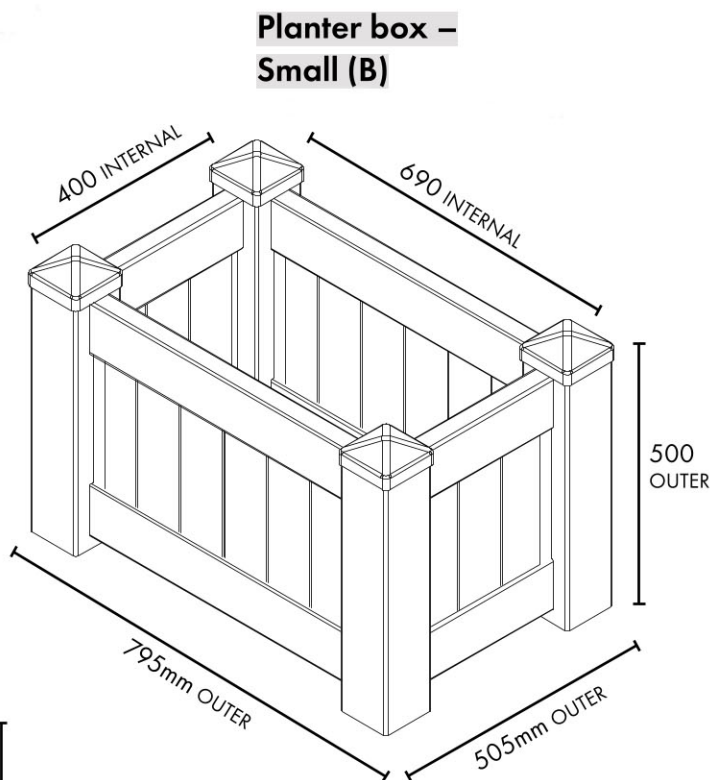
C

### SPECIFICATIONS

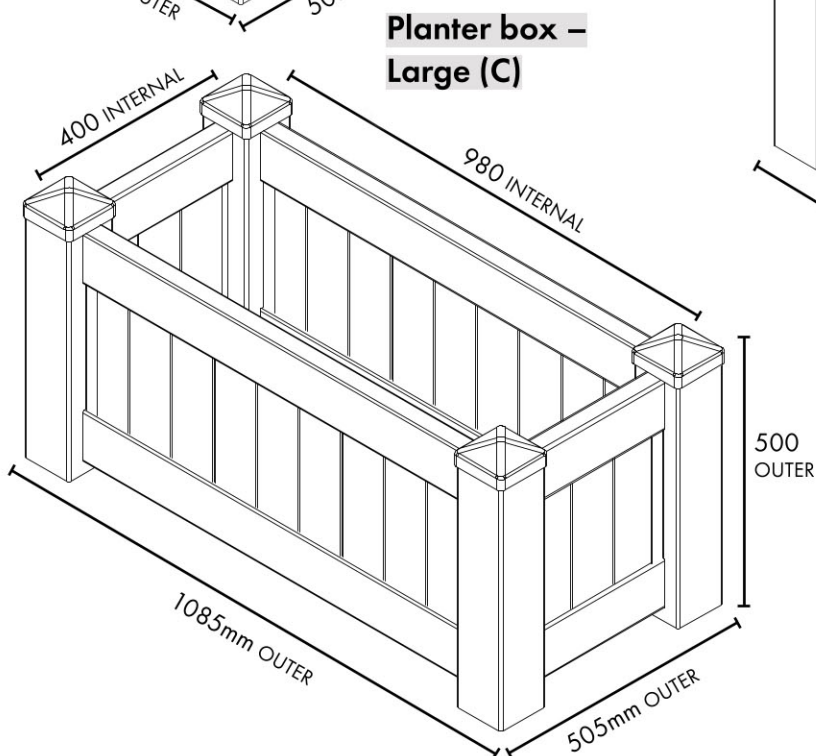
A	Outer dimensions: 505mm W x 505mm L x 500mm H	Internal dimensions: 400mm W x 400mm L x 380mm H
B	Outer dimensions: 505mm W x 795mm L x 500mm H	Internal dimensions: 400mm W x 690mm L x 380mm H
C	Outer dimensions: 505mm W x 1085mm L x 500mm H	Internal dimensions: 400mm W x 980mm L x 380mm H



**Planter box – Square (A)**



**Planter box – Small (B)**

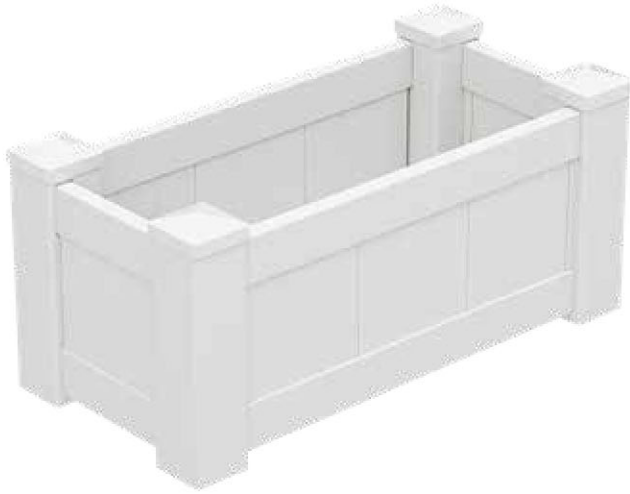


**Planter box – Large (C)**

### MATERIAL

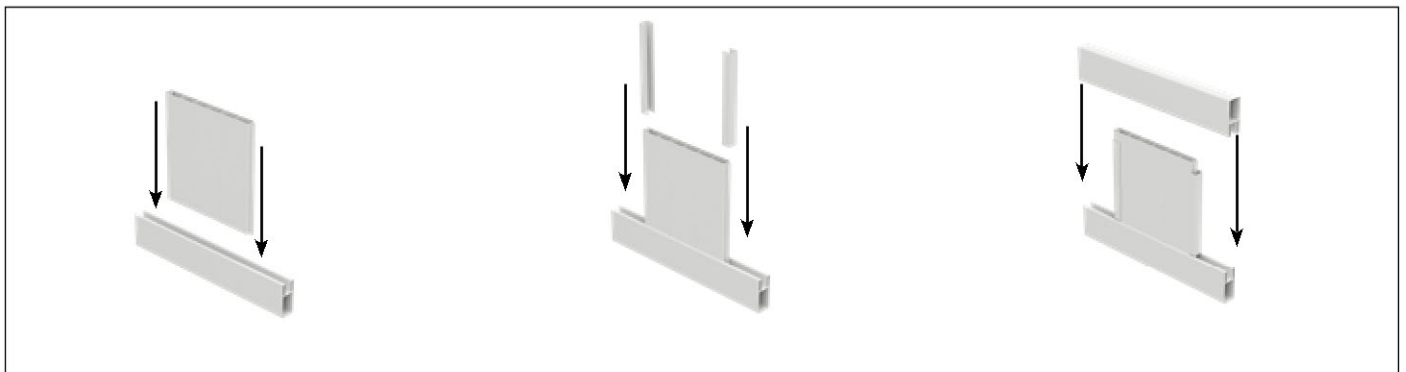
DURABLE PVC FINISH – UV STABLE

# PLANTER BOX – ASSEMBLY GUIDE

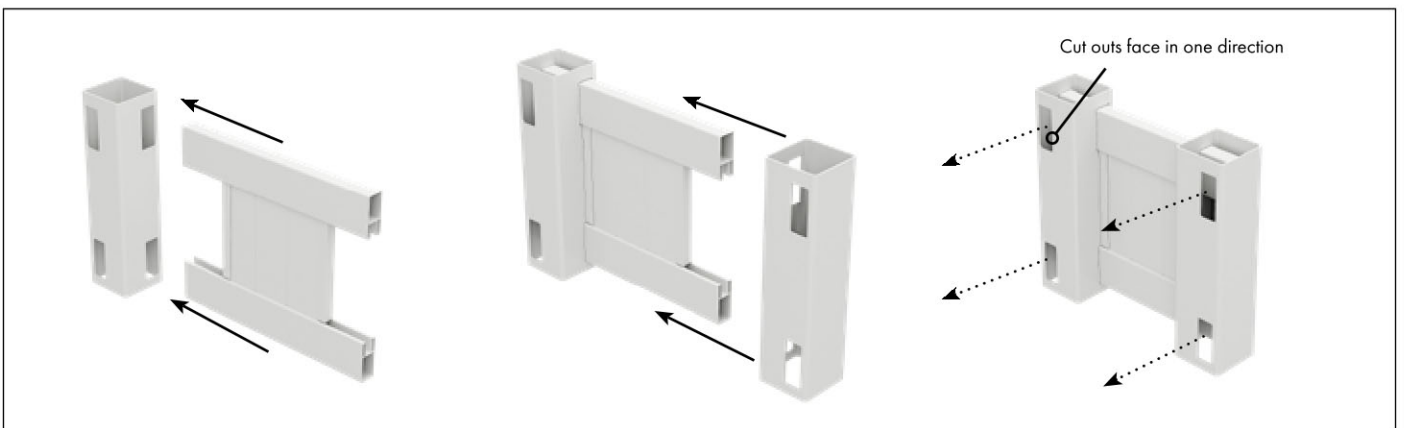


## Material List

Item	QTY
Post	4
Top Rail	4
Bottom Rail	4
Panel	4 (505mm wide planter box) 6 (795mm wide planter box) 8 (1085mm wide planter box)
U-Channel	8
Floor Rails	3
Bottom Panel	1
Locking Plate	8
Screws	24
Post Cap	4

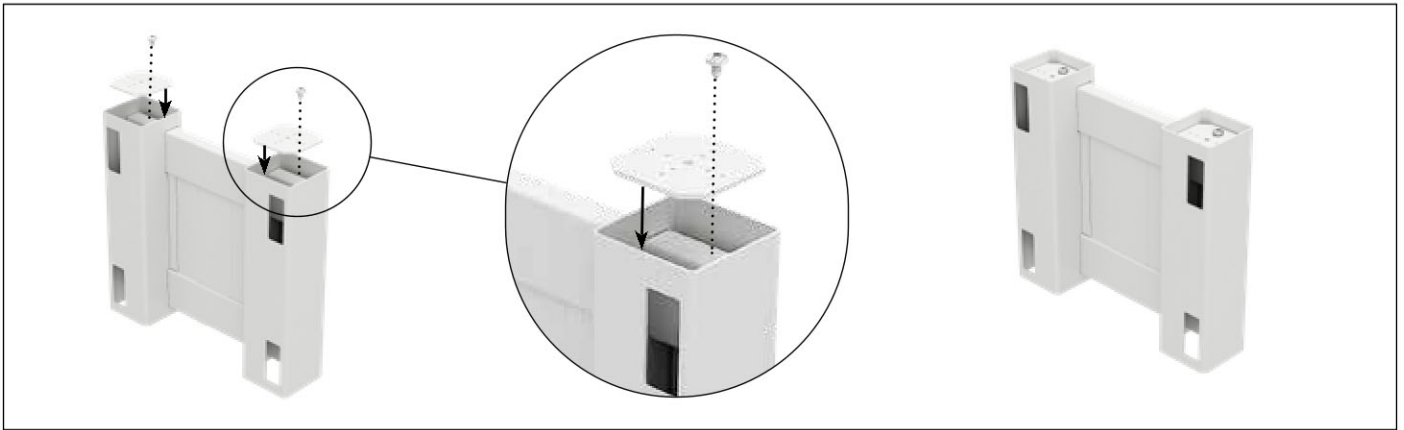


**1** Assemble ends. Insert panel into end top and bottom rail with U channels on each side.

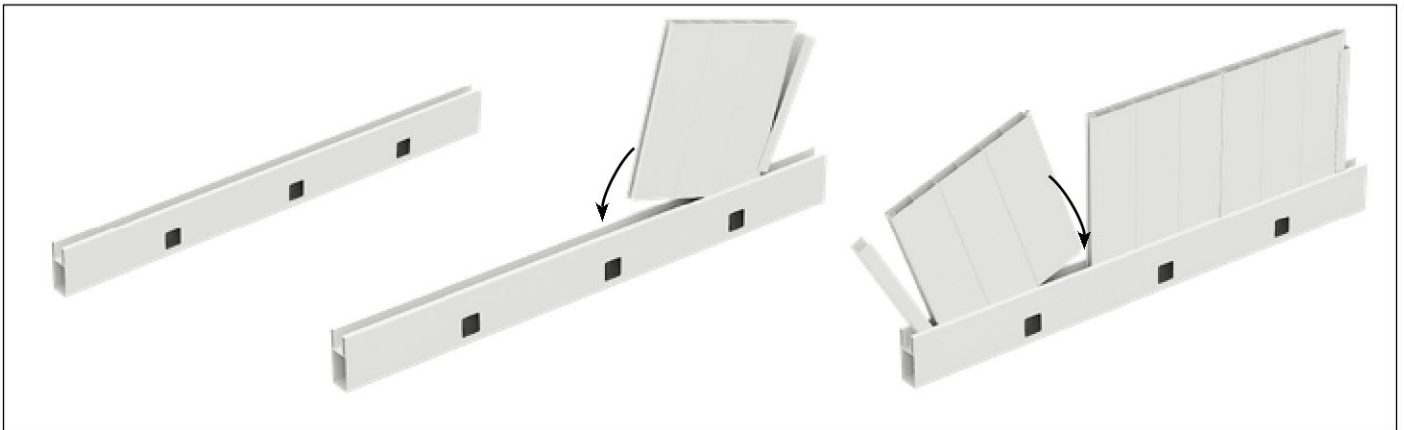


**2** Push assembled end into corner post.  
Line up with 2nd corner post, making sure cut outs are facing the same direction.  
Repeat steps 1 & 2 for second end.

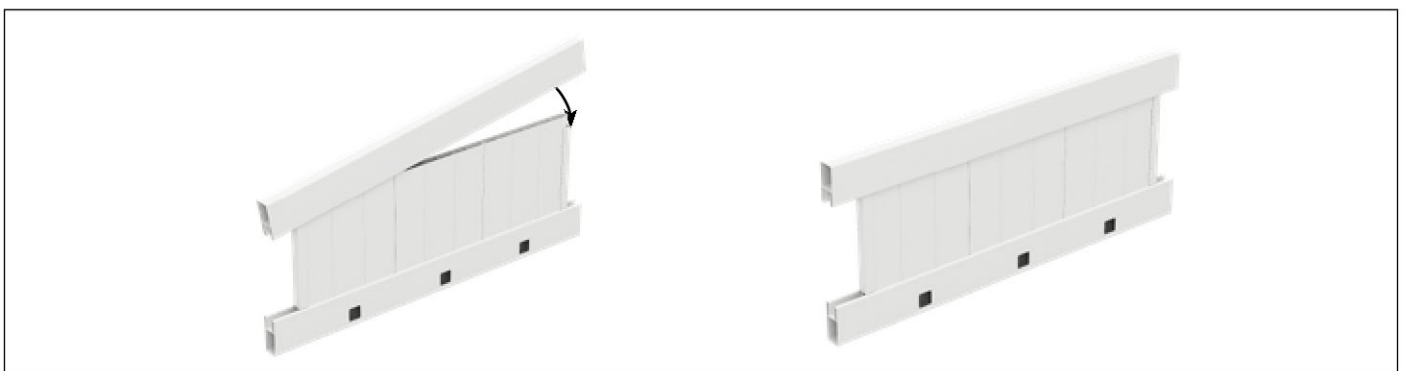
# PLANTER BOX – ASSEMBLY GUIDE



- 3 For both end assemblies: Attach locking plate with screw to hold rail in position on top only.  
The position of the locking plate will determine top of planter box – do not install a locking plate on the bottom side (other end).

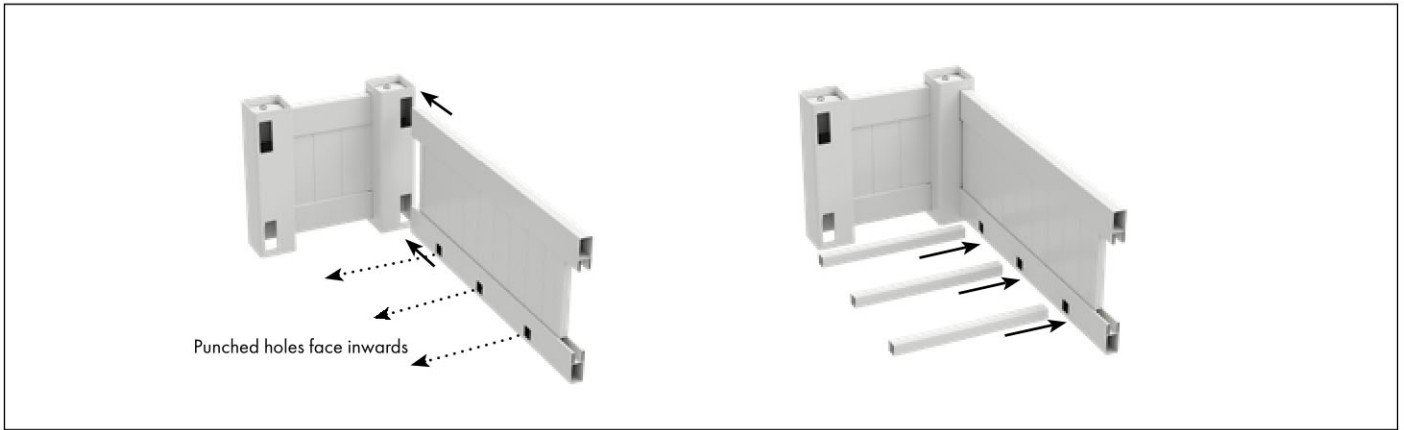


- 4 Locate side bottom rails (bottom rails have 3 x square punched holes along length).  
Insert panels into side bottom rails (note depending on the chosen planter size you will have either 2 or 3 panels to insert into bottom rail).  
U channel should be inserted on both ends.

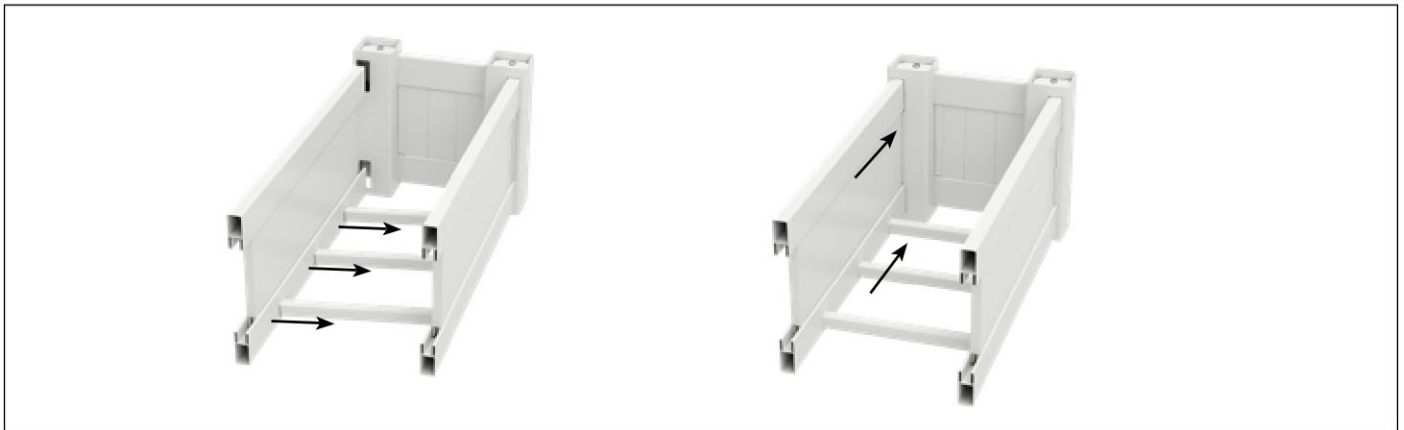


- 5 Attach side top rail. Repeat steps 4 & 5 to assemble second side.

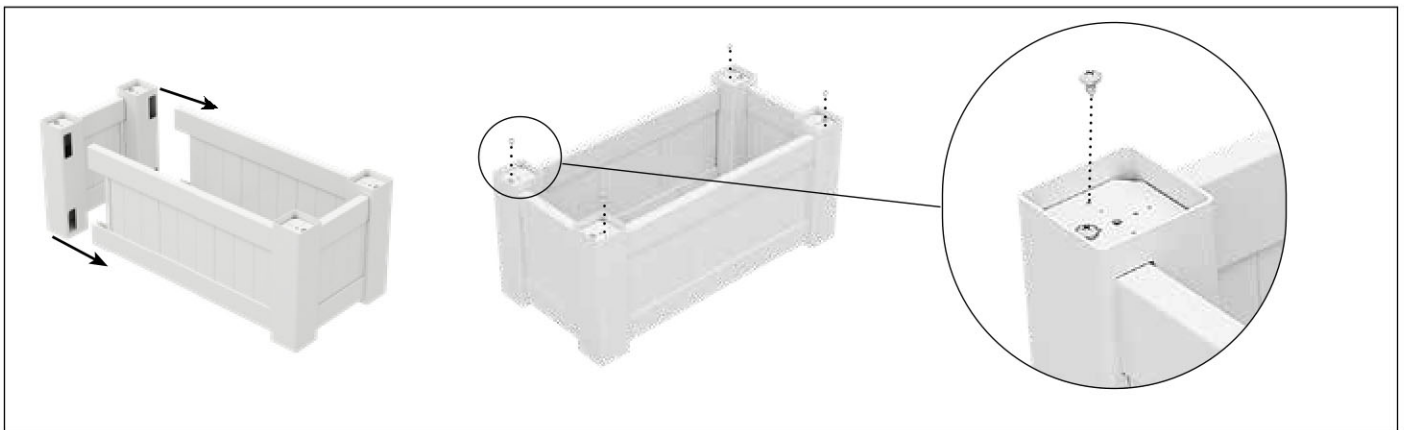
# PLANTER BOX – ASSEMBLY GUIDE



- 6** Attach sides to ends ensuring punched holes face inwards.  
Insert 3 x square floor rails into side bottom rail.

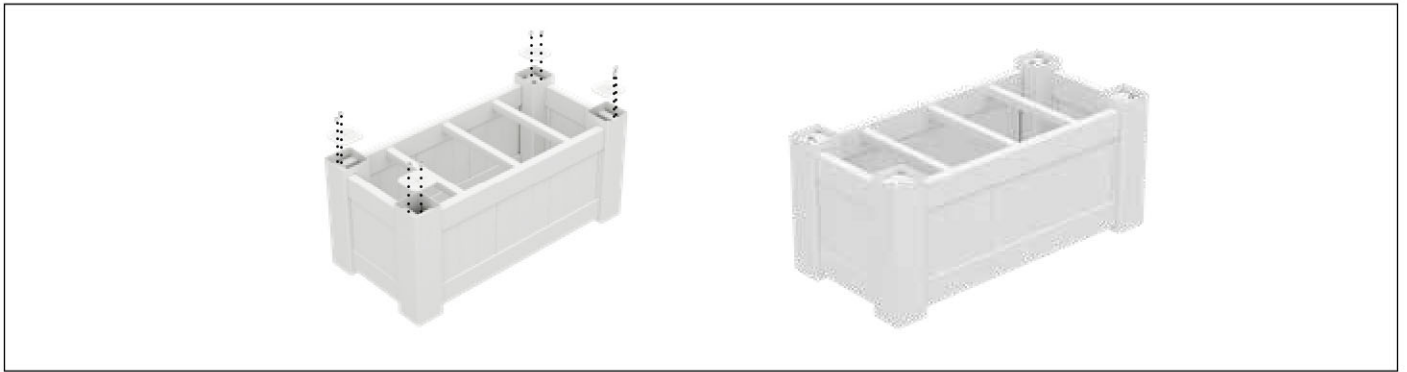


- 7** Line up and attach second side bottom rail to floor rails.  
Line up and attach side to end piece.

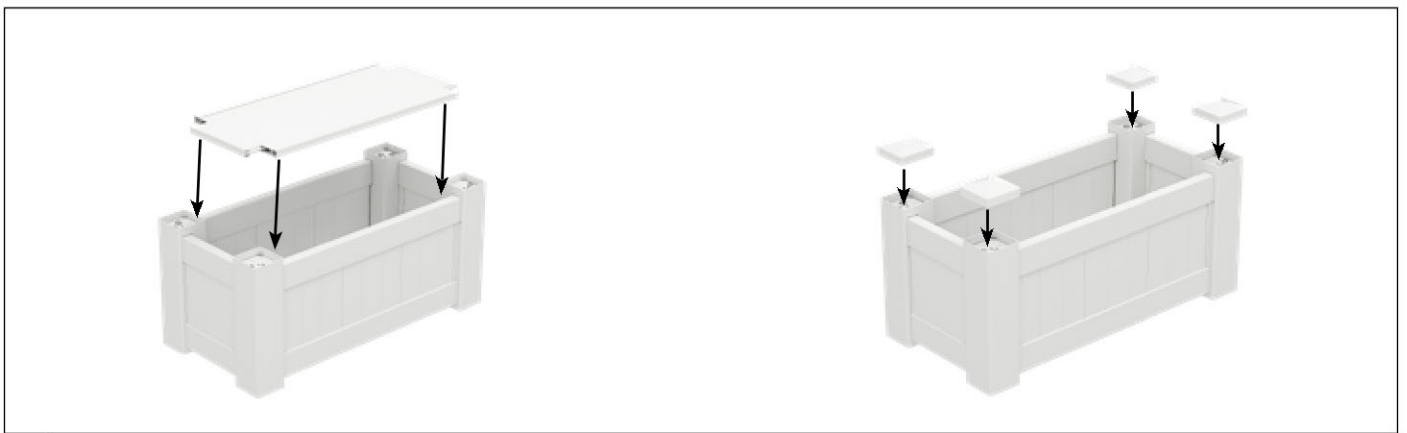


- 8** Line up and attach remaining end piece. Before screwing off, ensure planter box in correct shape – angles must be at 90 degrees.  
Screw ends and sides together through top locking plates only on all corners.

# PLANTER BOX – ASSEMBLY GUIDE



9 Turn upside down and screw in bottom locking plates to rails x 4.



10 Once all rails are secure, turn correct side up and place into position bottom panel.  
Place on post caps x 4.

